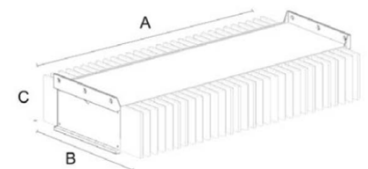


beLine70A 145 W

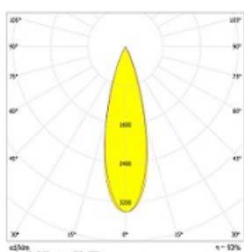
- light source **OSRAM**
- total consumption **145 W ± 5 %**
- LED output @ + 25 °C **+ 50 °C**
- total lm (LED) **20.692 lm 19.864 lm**
- lm / wat (LED) **143 lm/wat 137 lm/wat**
- Tj (°C) **70 °C 90 °C**
- luminaire output @ 25 °C **18.275 lm - 19.864 lm**
- LED working @ **50 %**
- input voltage **180-260 V**
- input frequency **50 - 60 Hz**
- LED driver **TRIDONIC or INVENTRONICS**
- LED driver efficiency **92 % - 94%**
- power factor @ full power **99%**
- colour temperature **4500 K**
- CRI **70**
- secondary optics **no optics, N, W, WW, WWW, SHELVING**
- radio dimming **optional** DALI **optional**
- PIR sensor **optional** 0-10 **optional**
- operating temperature **-30 °C to +55 °C**
- mounting height **4 m to 30 m**
- lamp lifespan **L70@100.000 hrs**
- warranty on all components **50.000 hrs or 5 years**
- housing – heatsink **extruded 99,7% aluminum**
- optics cover **3.2 mm extra white tempered glass**
- connection **IP66 connector**
- cooling surface **0,82 m2**
- IP rating **IP65**
- IK code **IK08**
- protection class IEC **class I**
- rough service mark **YES**
- lamp dimensions **A/B/C = 425/315/130 mm**
- lamp weight **8,9 kg**
- packaging dimensions **A/B/C = 525/320/150 mm**
- packaging weight **9,4 kg**



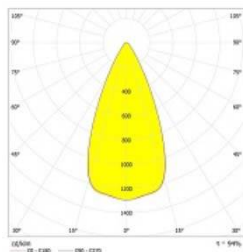
side connector , dimming transmitter



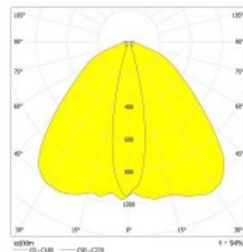
Photometric curves



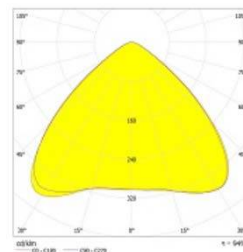
N NARROW



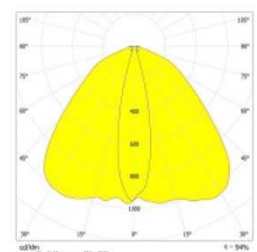
W WIDE



WW VERYWIDE



WWW VERYVERYWIDE



WH SHELVING

beLine70A 145 W

Lamp version	optics	lm output	efficiency
145W beLine 70A [FR] - 48OGWN470-00FREE00-400A1	NO OPTICS	19.864 lm	137 lm/wat
145W beLine 70A [N] - 48OGWN470-30C13233-400A1	N (NARROW)	18.474 lm	127 lm/wat
145W beLine 70A [W] - 48OGWN470-49C14605-400A1	W (WIDE)	18.673 lm	129 lm/wat
145W beLine 70A [WW] - 48OGWN470-64C14606-400A1	WW (VERYWIDE)	18.275 lm	126 lm/wat
145W beLine 70A [WWW] - 48OGWN470-104 C14724-400A1	WWW (VERYVERYWIDE)	18.673 lm	129 lm/wat
145W beLine 70A [WH] - 48OGWN470-WHC13749-400A1	WH (SHELVINGS)	18.673 lm	129 lm/wat

Other lamp performance options

Radio dimming is optional. Lamps with radio beBox dimming have **-D** at the end.

example: 145W beLine 70A-D [N] - 48OGWN470-30C13233-400A1

(Inventronics EUD series LED driver)

Lamps can have PIR sensor and dimming at the same time. Lamps have **-PD** at the end.

example: 145W beLine 70A-PD [N] - 48OGWN470-30C13233-400A1

(Inventronics EUD series LED driver)

Lamps can have a DALI LED driver inside. Lamps have **-DALI** at the end.

example: 145W beLine 70A-DALI [N] - 48OGWN470-30C13233-400A1

(Inventronics or Tridonic LCA series)

Lamps can have a 0-10 dimmable LED driver inside. Lamps have **-(0-10)** at the end.

example: 145W beLine 70A-(0-10) [N] - 48OGWN470-30C13233-400A1

(Inventronics EUD series LED driver)

INVENTRONICS programmable LED drivers (EUD series) are used for dimmable and PIR options. For a standard ON/OFF lamp there is a TRIDONIC (LCA series) option. Both LED drivers come with 5 year warranty.

Mounting kit options



Reflector MC



Wall MC



Low ceiling MC



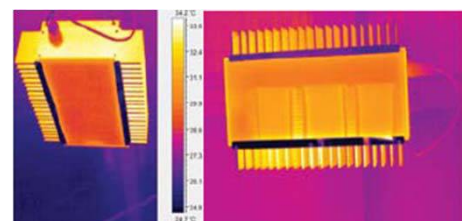
Steel chain



Wire hanging kit

Heat sink design

Unique linear design with vertical ribs allows the LEDs to have an optimal heat dissipation without a worry of them overheating. Side vertical ribs allow the dust to fall off the lamp and prevent accumulation of dust on the vital parts of the lamp's heat sink.



Certificates and protection

