

beLine70A 175 W

light source **OSRAM**

total consumption **175 W ± 5 %**

LED output @ + 25 °C + 50 °C + 70 °C

total lm (LED) **25.309 lm** **24.296 lm** **23.790 lm**

lm / wat (LED) **145 lm/wat** **139 lm/wat** **136 lm/wat**

T_J (°C) **70 °C** **90 °C** **105 °C**

luminaire output @ 25 °C **22.353 lm - 24.296 lm**

LED working @ **45 %**

input voltage **180-260 V**

input frequency **50 - 60 Hz**

LED driver **TRIDONIC or INVENTRONICS**

LED driver efficiency **92 % - 94%**

power factor @ full power **99%**

colour temperature **4500 K**

CRI **70**

secondary optics **no optics, N, W, WW, WWW, SHELVING**

radio dimming **optional** **DALI optional**

PIR sensor **optional** **0-10 optional**

operating temperature **-30 °C to +70 °C**

mounting height **4 m to 35 m**

lamp lifespan **L70@100.000 hrs**

warranty on all components **50.000 hrs or 5 years**

housing – heatsink **extruded 99,7% aluminum**

optics cover **3.2 mm extra white tempered glass**

connection **IP66 connector**

cooling surface **1,22 m²**

IP rating **IP65**

IK code **IK08**

protection class IEC **class I**

rough service mark **YES**

lamp dimensions **A/B/C = 625/315/130 mm**

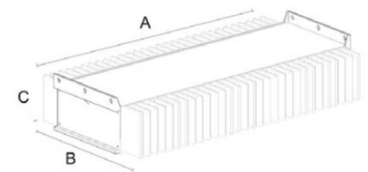
lamp weight **11,1 kg**

packaging dimensions **A/B/C = 725/320/150 mm**

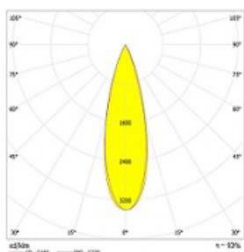
packaging weight **11,6 kg**



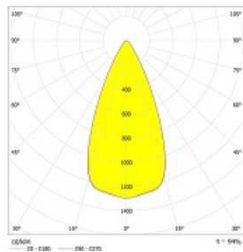
side connector , dimming transmitter



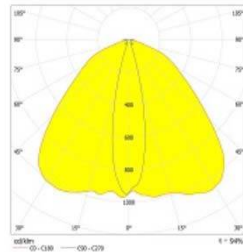
Photometric curves



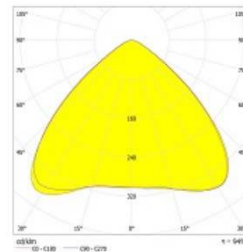
N NARROW



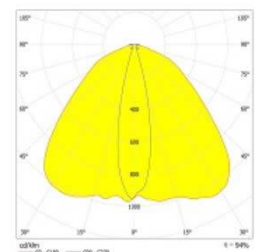
W WIDE



WW VERYWIDE



WWW VERYVERYWIDE



WH SHELVING

beLine70A 175 W

Lamp version	optics	lm output	efficiency
175W beLine 70A [FR] - 64OGWN470-00FREE00-600A1	NO OPTICS	24.296 lm	139 lm/wat
175W beLine 70A [N] - 64OGWN470-30C13233-600A1	N (NARROW)	22.596 lm	129 lm/wat
175W beLine 70A [W] - 64OGWN470-49C14605-600A1	W (WIDE)	22.839 lm	131 lm/wat
175W beLine 70A [WW] - 64OGWN470-64C14606-600A1	WW (VERYWIDE)	22.353 lm	128 lm/wat
175W beLine 70A [WWW] - 64OGWN470-104 C14724-600A1	WWW (VERYVERYWIDE)	22.839 lm	131 lm/wat
175W beLine 70A [WH] - 64OGWN470-WHC13749-600A1	WH (SHELVINGS)	22.839 lm	131 lm/wat

Other lamp performance options

Radio dimming is optional. Lamps with radio beBox dimming have **-D** at the end.

example: 175W beLine 70A-D [N] - 64OGWN470-30C13233-600A1

(Inventronics EUD series LED driver)

Lamps can have PIR sensor and dimming at the same time. Lamps have **-PD** at the end.

example: 175W beLine 70A-PD [N] - 64OGWN470-30C13233-600A1

(Inventronics EUD series LED driver)

Lamps can have a DALI LED driver inside. Lamps have **-DALI** at the end.

example: 175W beLine 70A-DALI [N] - 64OGWN470-30C13233-600A1

(Inventronics or Tridonic LCA series)

Lamps can have a 0-10 dimmable LED driver inside. Lamps have **-(0-10)** at the end.

example: 175W beLine 70A-(0-10) [N] - 64OGWN470-30C13233-600A1

(Inventronics EUD series LED driver)

INVENTRONICS programmable LED drivers (EUD series) are used for dimmable and PIR options. For a standard ON/OFF lamp there is a TRIDONIC (LCA series) option. Both LED drivers come with 5 year warranty.

Mounting kit options



Reflector MC



Wall MC



Low ceiling MC



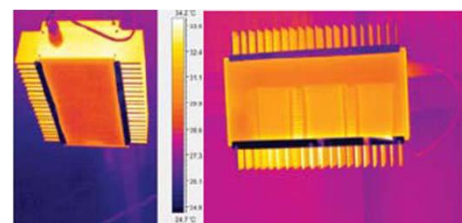
Steel chain



Wire hanging kit

Heat sink design

Unique linear design with vertical ribs allows the LEDs to have an optimal heat dissipation without a worry of them overheating. Side vertical ribs allow the dust to fall off the lamp and prevent accumulation of dust on the vital parts of the lamp's heat sink.



Certificates and protection

